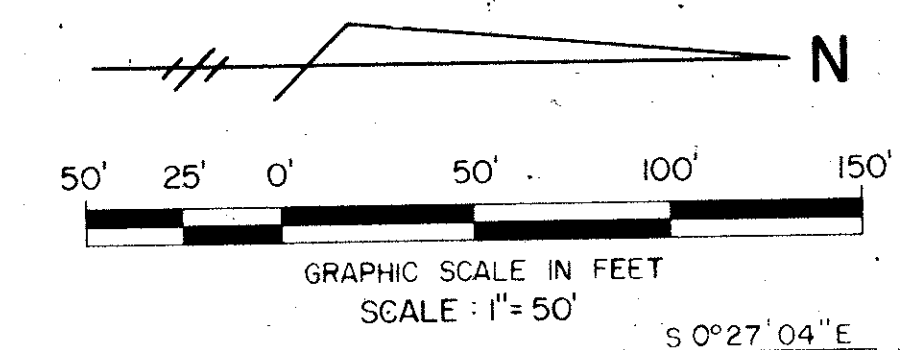


WINDWARD PALM BEACH (A P.U.D.)

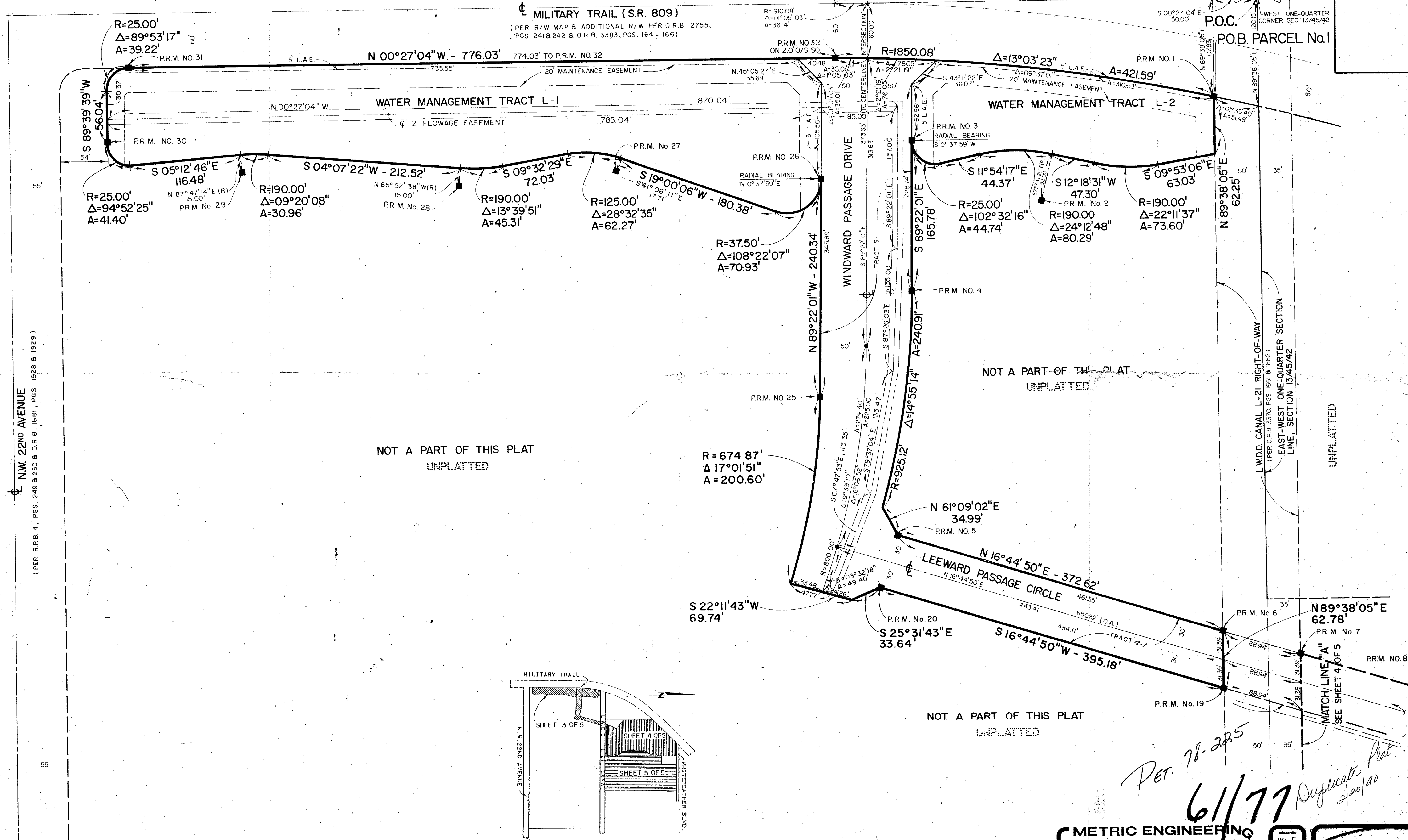
77

BEING A PLAT OF A PORTION OF SECTION 13, TOWNSHIP 45 SOUTH, RANGE 42 EAST, PALM BEACH COUNTY, FLORIDA
AUGUST, 1988
SHEET 3 OF 5

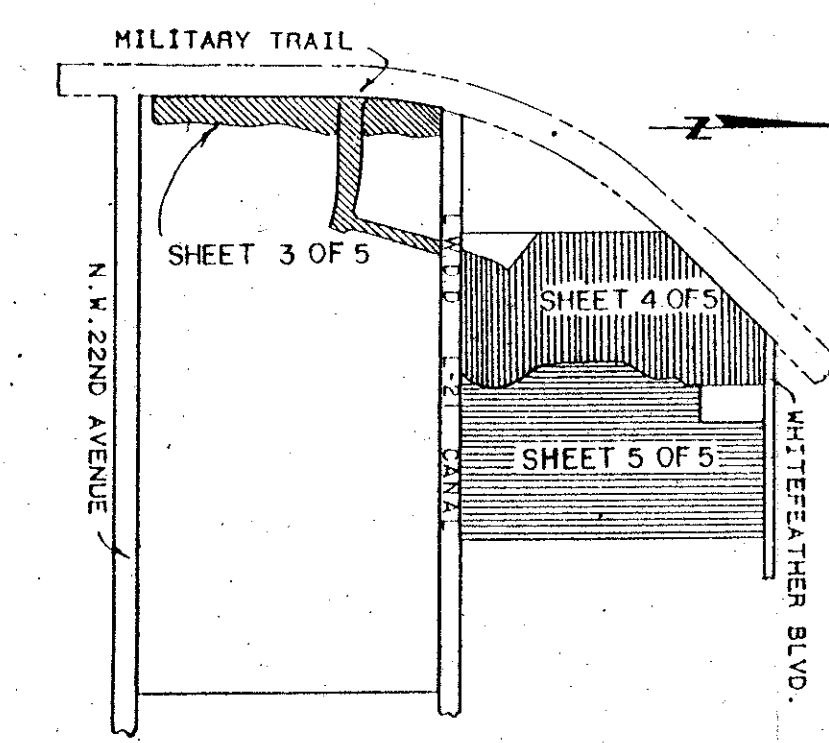


NOTE: THE STATE PLANE COORDINATE VALUE SHOWN HEREON IS PER THE PALM BEACH COUNTY SURVEY DEPARTMENT WEST LINE SW 1/4 SEC. 13/45/42.

806345.5214 N
786700.5229 E



Windward Palm Beach
6' B
34
RS 78-225
33463
13/15/82
T.A.Z. 428
PUB



WINDWARD P.U.D.
SHEET INDEX
N.T.S.

Per. 78-225
61/77 Duplicate Plat
2/20/90

METRIC ENGINEERING INC.
ENGINEERS - PLANNERS - SURVEYORS
MIAMI - WEST PALM BEACH

WINDWARD PALM BEACH
SHEET 3 OF 5